

## Pearsall's Gossamer Silk

Colour Order - Left to Right  
 (*Alternate Colour Name*)

Check List

### First Row:

- 1 White
- 2 Straw
- 3 Primrose
- 4 Light Yellow

### Second Row:

- 5. Yellow (*Lemon*)
- 6 Amber
- 6A Light Orange (*Gold*)
- 6B Sherry Spinner

### Third Row:

- 7 Blue
- 8 Purple
- 9 Black
- 9A Grey (*Silver Grey*)

### Fourth Row:

- 10 Ash
- 11 Golden Olive(*Gold Yellow*)
- 11A Scarlet
- 12 Cardinal

### Fifth Row:

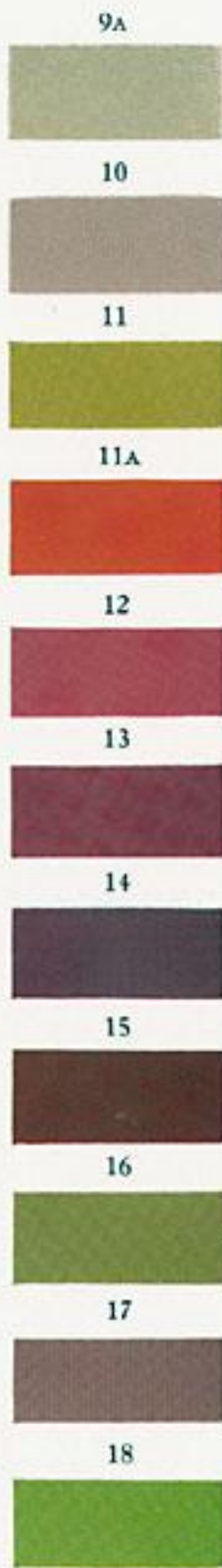
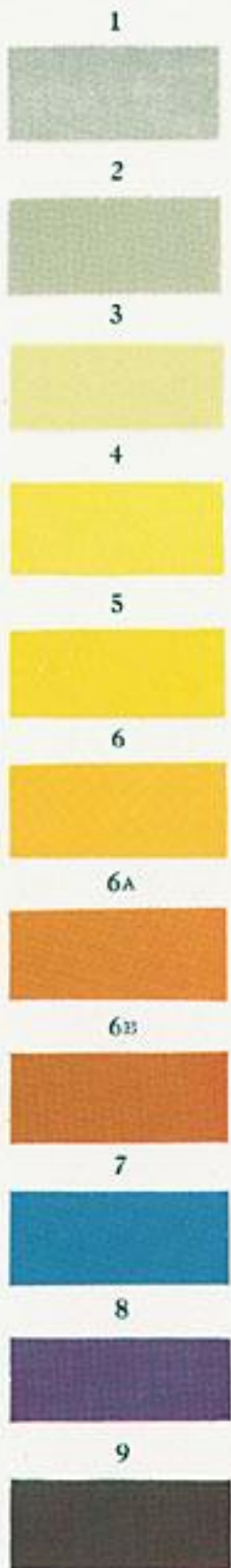
- 13 Crimson
- 14 Claret
- 15 Maroon (*Dark Claret*)
- 16 Olive

### Sixth Row:

- 17 Brown
- 18 Green (*Highland Green*)
- 19 Hot Orange
- 20 Light Olive







# Pearsall's Silk

G = Gossamer (Extra Fine Silk)

N = Naples (Fine Silk)

M = Marabou (Fine Floss Silk)

(*Alternate Colour Name*)

## Tyer's Reference Chart

Prepared by Raymond "letumgo" Tucker (May'11)

1 White	G/ /M
2 Straw	G/ /
3 Primrose	G/N/M
4 Light Yellow	G/N/
5 Yellow ( <i>Lemon</i> )	G/N/M
6 Amber	G/N/
6A Light Orange ( <i>Gold</i> )	G/N/M
6B Sherry Spinner	G/ /
7 Blue	G/ /M
8 Purple	G/N/M
9 Black	G/N/M
9A Grey ( <i>Silver Grey</i> )	G/ /M
10 Ash	G/ /
11 Golden Olive( <i>Gold Yellow</i> )	G/N/
11A Scarlet	G/N/M
12 Cardinal	G/ /M
13 Crimson	G/ /
14 Claret	G/N/M
15 Maroon ( <i>Dark Claret</i> )	G/N/
16 Olive	G/N/M
17 Brown	G/N/M
18 Green ( <i>Highland Green</i> )	G/N/M

"Shades of Silk" Image is Property of Pearsall's  
(<http://www.pearsallsembroidery.com>)

Pearsalls Embroidery

Langley Threads

18, Heathway

Cardiff

CF14 4JT

Wales

Or phone Carol or John on

029 2063 3353 or

(44 29 2063 3353 from outside the UK)

Fax: 029 2025 4092 or

(44 29 2025 4092 from outside the UK)

*Shades of Silk.*